



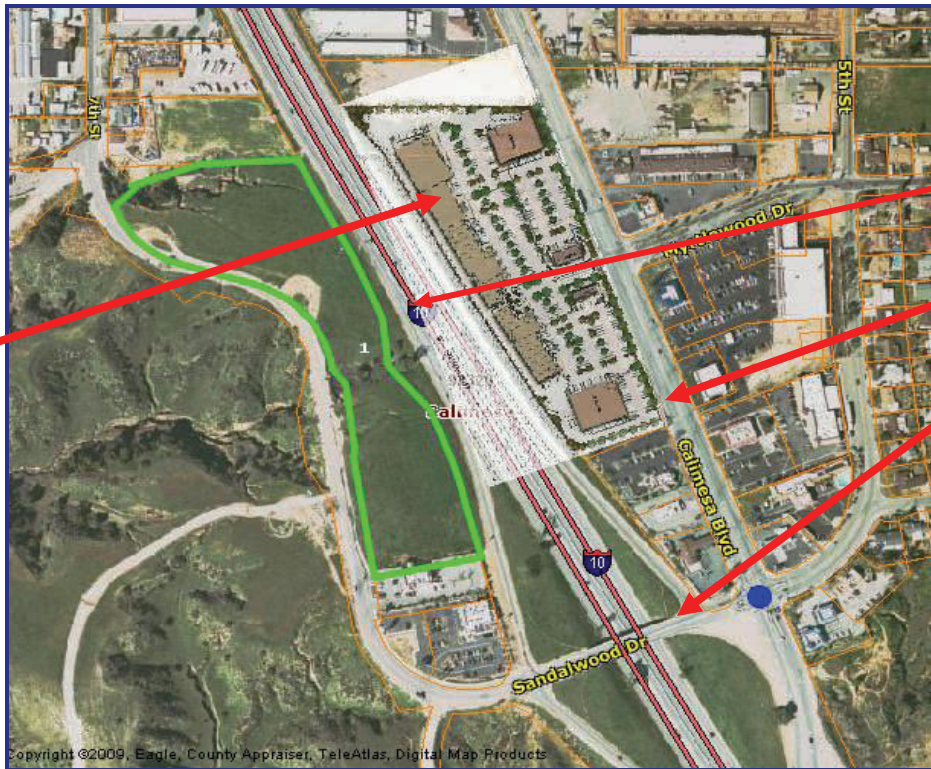
**CITY OF CALIMESA, CALIFORNIA**

# 7th Street & Sandalwood Dr.

This is an amazing property located in a commercially zoned area. Close to 1,300 feet of freeway frontage. Property is located within 100 yards of freeway on and off ramp. Close to 1,200 homes entitled within a half mile of the site and a new middle school located less than a quarter mile away. This property would make an excellent shopping center for restaurants, retail, and other commercial uses.

Lot Size: 9.33 Acres

Average Daily Traffic Counts: I-10: 102,800

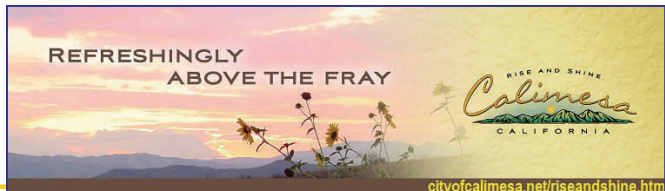


- Interstate 10
- Calimesa Blvd.
- Sandalwood Dr. (I-10 on and off ramps)

The Shoppes at Calimesa



Calimesa is located approximately 75 miles east of Los Angeles and 30 miles west of Palm Springs in Riverside County. Ontario/Los Angeles International Airport is located approximately 30 miles east of Calimesa.



**SEE BACK OF PAGE FOR DEMOGRAPHIC INFORMATION**

City of Calimesa  
 908 Park Avenue  
 Calimesa, CA 92320  
[www.cityofcalimesa.net/riseandshine.htm](http://www.cityofcalimesa.net/riseandshine.htm)

Randy Anstine, City Manager  
[ranstine@cityofcalimesa.net](mailto:ranstine@cityofcalimesa.net)  
 Phone: 909.795.9801  
 Fax: 909.795.6187